



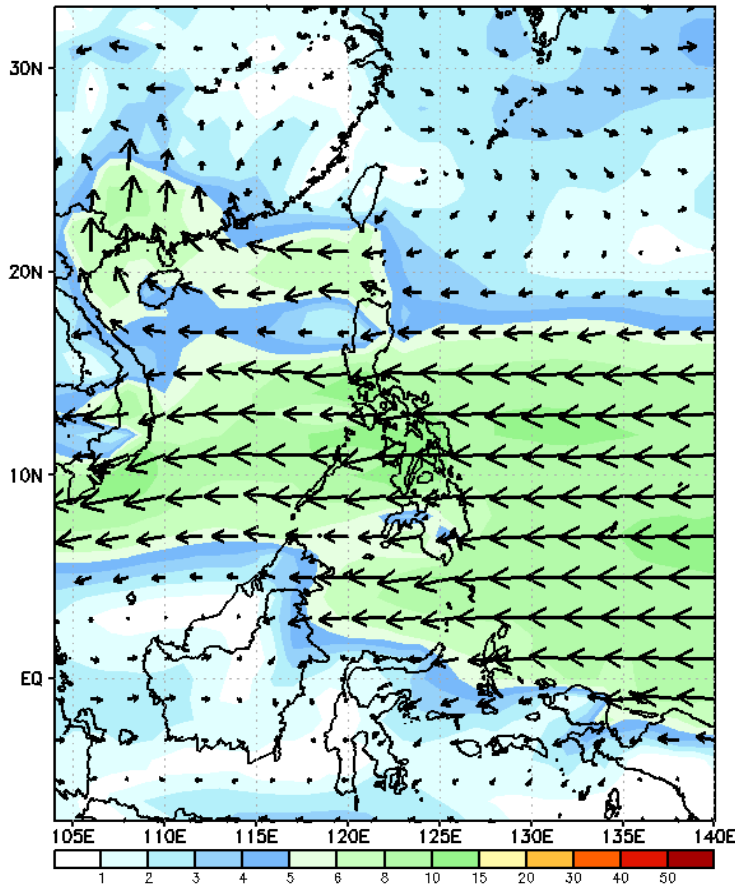
Week 1 & Week 2 Forecast for the Philippines using GEFS Model



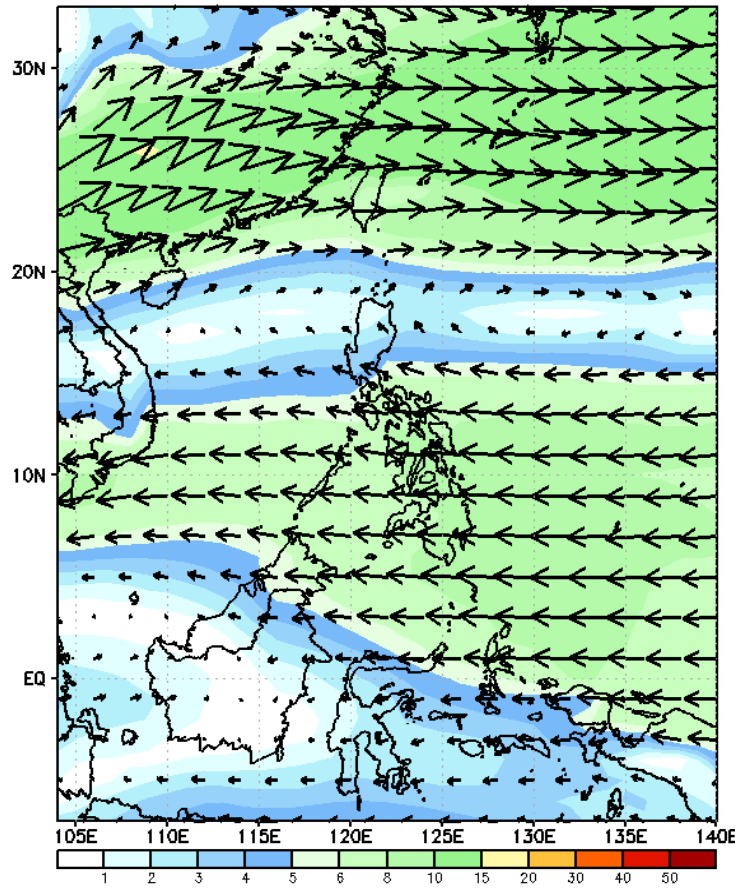
GEFS Week-1 Wind Forecasts:

Week 1: Mar 05-11, 2025

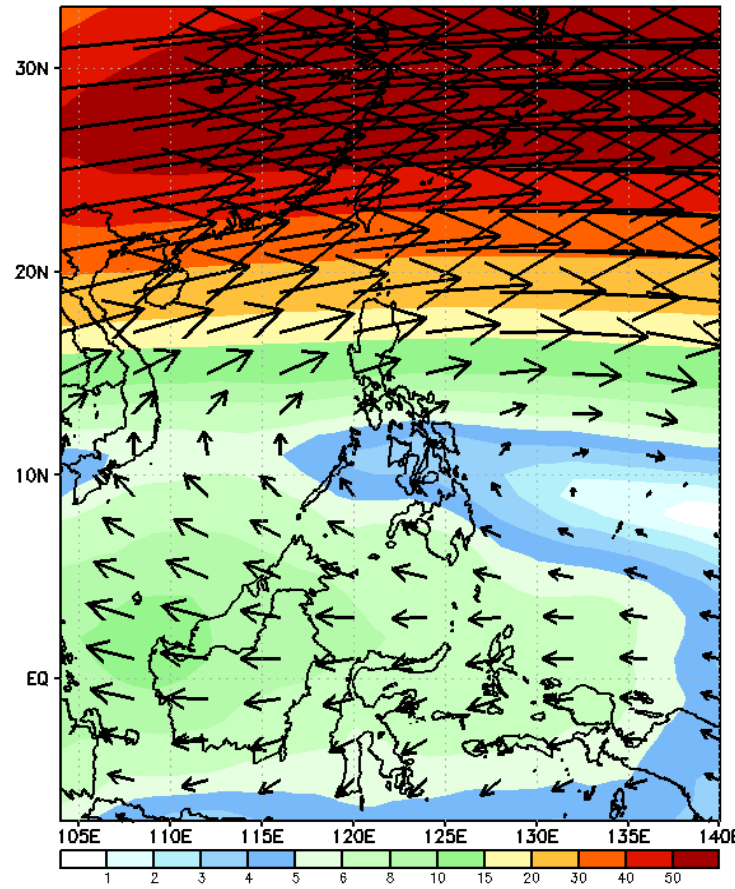
GEFS Week-1 850-hPa Wind Total
Valid: 20250305 - 20250311



GEFS Week-1 700-hPa Wind Total
Valid: 20250305 - 20250311

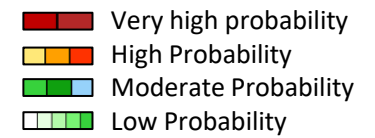


GEFS Week-1 200-hPa Wind Total
Valid: 20250305 - 20250311



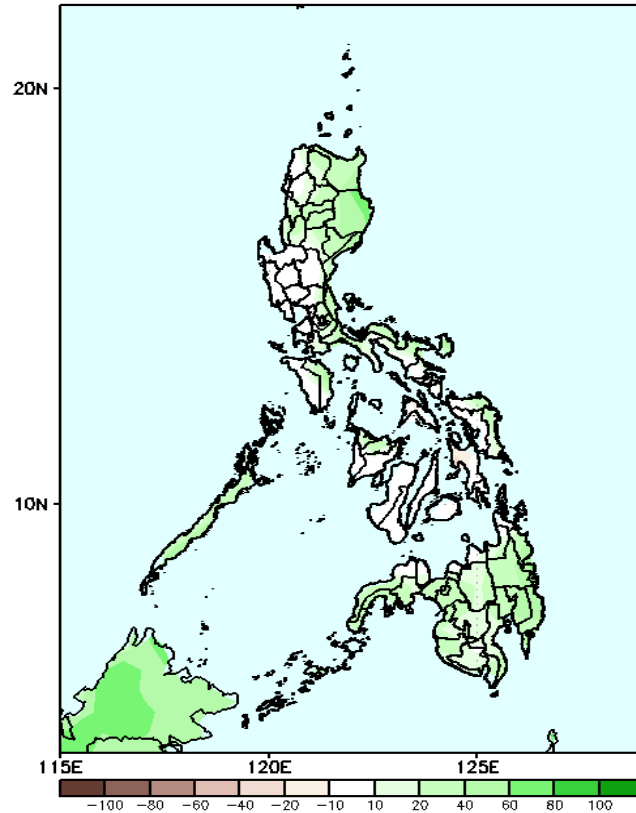
Northeast Monsoon affecting Northern Luzon while Easterlies affecting the rest of the country during the forecast period

Precipitation Anomaly and Exceedance Probability > 25/50 mm



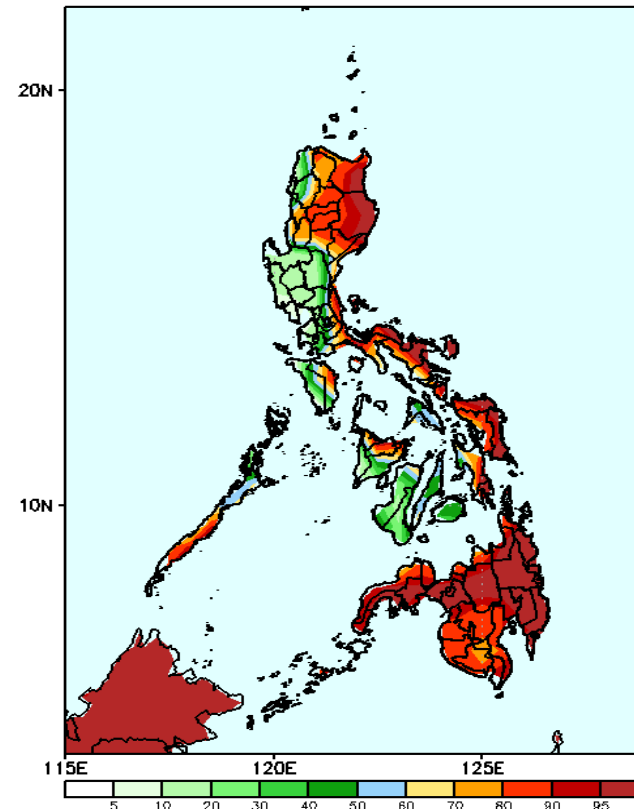
Week 1: Mar 05-11, 2025

GEFS Week-1 Precip Anomaly
Valid: 20250305 - 20250311



Increase of rainfall of 20-70mm is expected over eastern parts of Luzon, CAR, La Union, Ilocos Sur, Palawan, Or. Mindoro, Northern and Eastern Samar, Aklan, Capiz, and most parts of Mindanao.

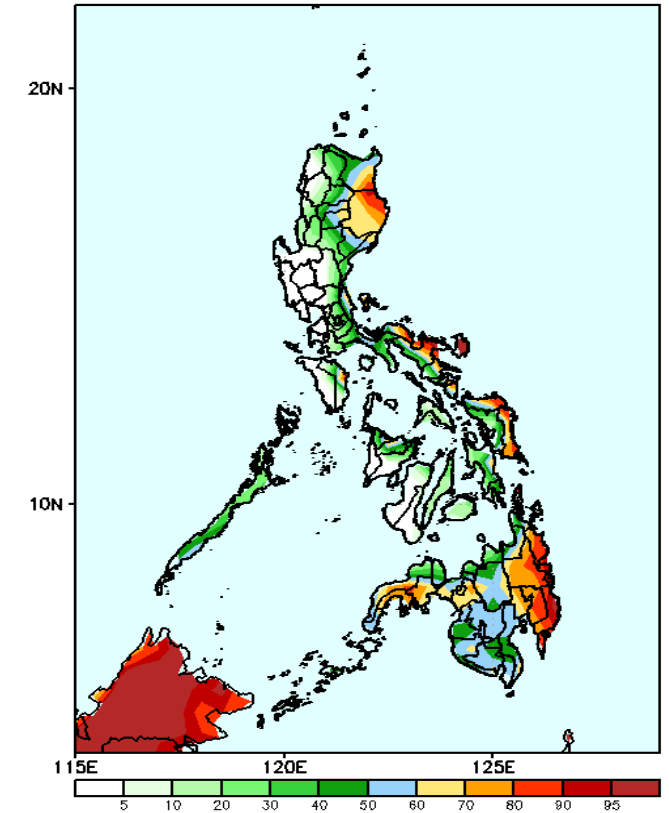
GEFS Week-1 Exceedance Prob. > 25mm
Valid: 20250305 - 20250311



Probability to Exceed 25mm

- High to very high over eastern parts of Luzon, CAR, Eastern Visayas, Capiz, and most parts of Mindanao;
- Moderate to high over southern Luzon, Ilocos Region, the rest of Visayas;
- Low to moderate over the rest of Luzon.

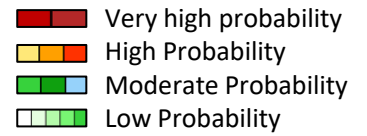
GEFS Week-1 Exceedance Prob. > 50mm
Valid: 20250305 - 20250311



Probability to Exceed 50mm

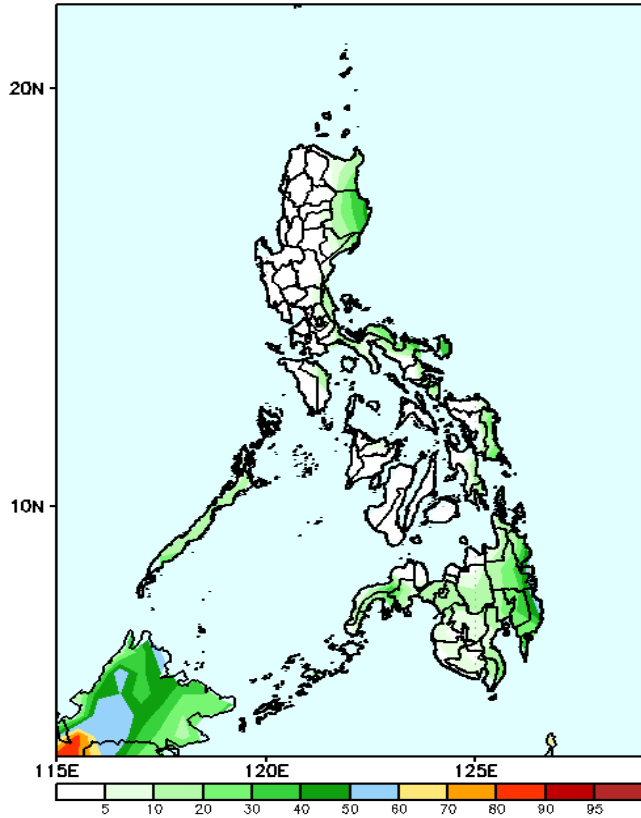
- Moderate to high over most of Cagayan Valley, eastern section of CAR, Quezon, Bicol Region, eastern part of Occidental Mindoro, Aklan, Capiz, Samar Provinces, eastern part of Leyte, and most parts of Mindanao;
- Low to moderate over the rest Luzon and Visayas.

Exceedance Probability > 100/150/200 mm



Week 1: Mar 05-11, 2025

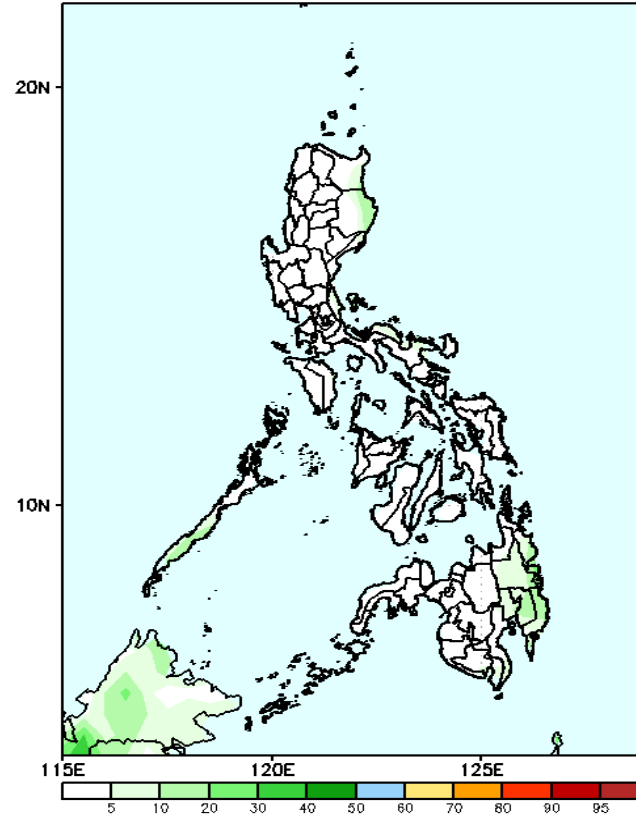
GEFS Week-1 Exceedance Prob. > 100mm
Valid: 20250305 - 20250311



Probability to Exceed 100mm

- Moderate to high over the eastern sections of Bicol Region, Northern and Eastern Samar and Surigao and Lanao Provinces;
- Low to moderate over the rest of Eastern Luzon, Visayas and Mindanao;
- Low over the rest of Luzon.

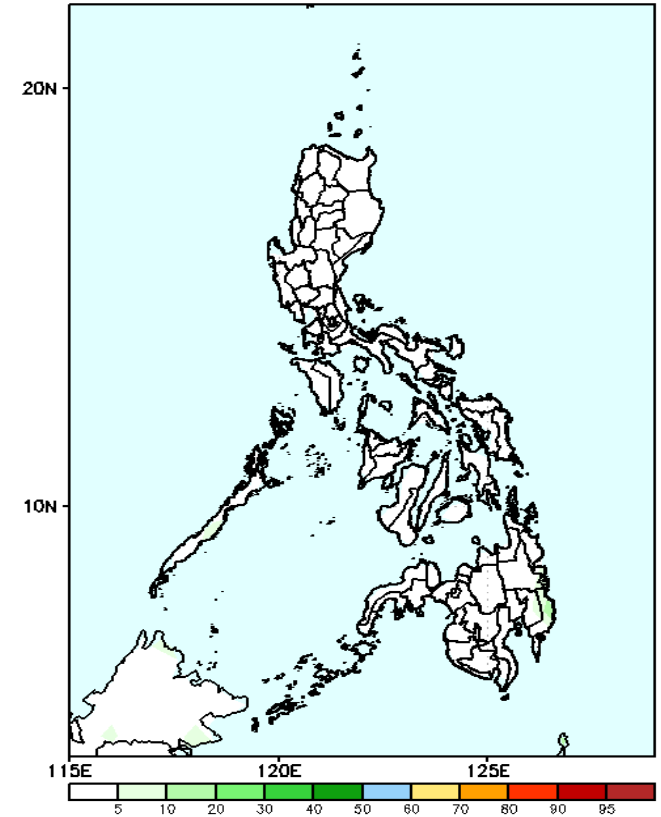
GEFS Week-1 Exceedance Prob. > 150mm
Valid: 20250305 - 20250311



Probability to Exceed 150mm

- Low to moderate over the eastern sections of Luzon and Mindanao;
- Low over the rest of the country.

GEFS Week-1 Exceedance Prob. > 200mm
Valid: 20250305 - 20250311



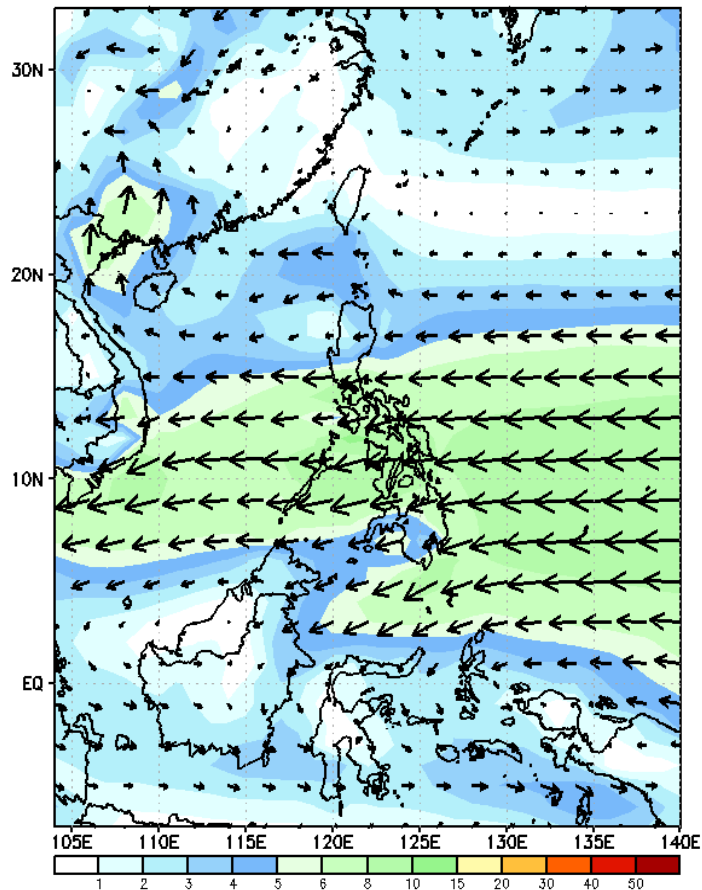
Probability to Exceed 200mm

- Low across the country.

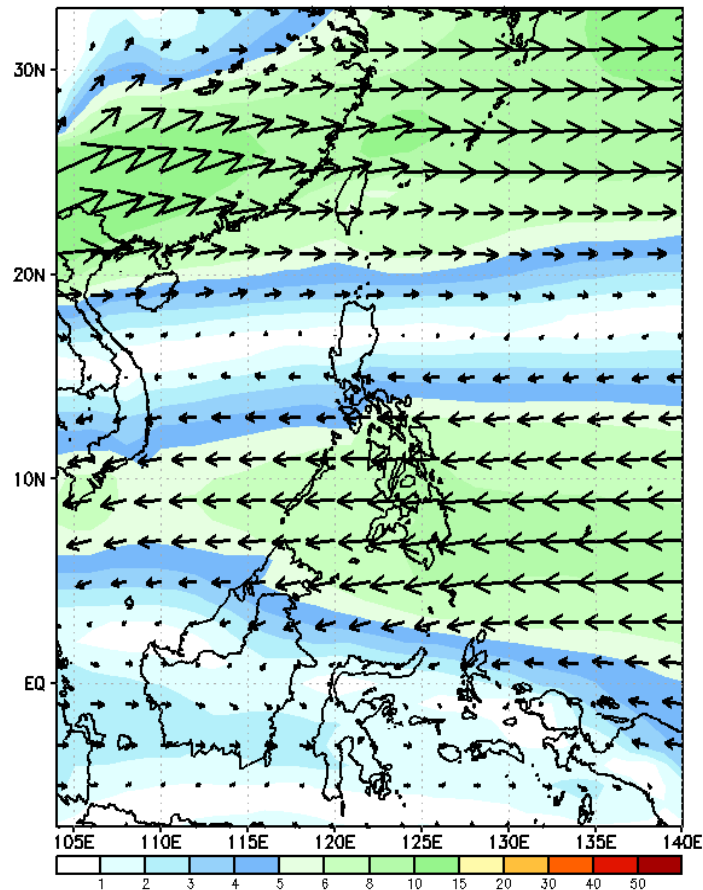
GEFS Week-2 Wind Forecasts:

Week 2: Mar 12-18, 2025

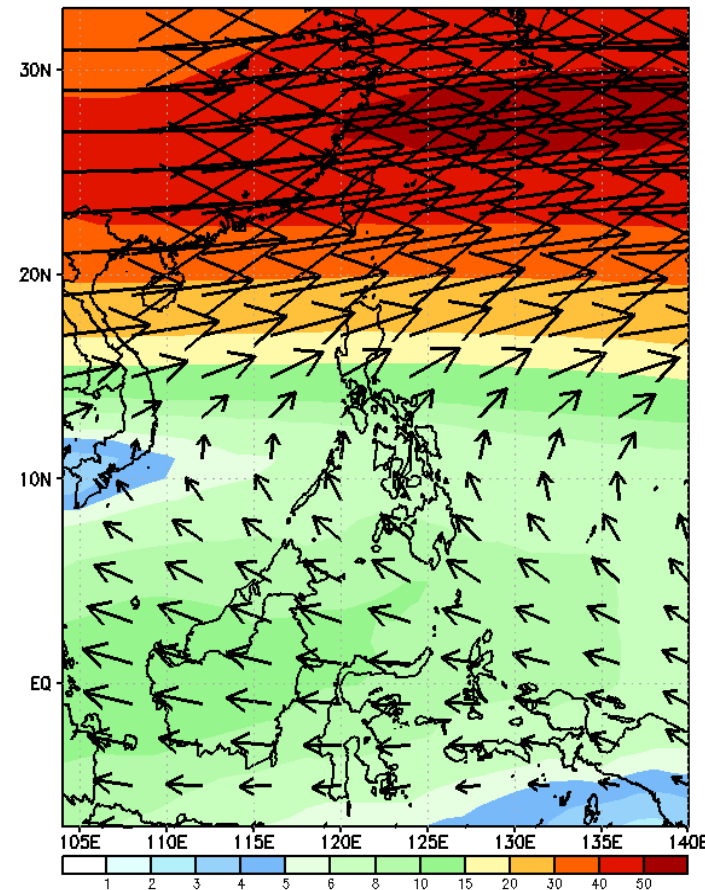
GEFS Week-2 850-hPa Wind Total
Valid: 20250312 - 20250318



GEFS Week-2 700-hPa Wind Total
Valid: 20250312 - 20250318

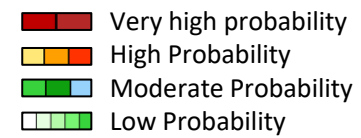


GEFS Week-2 200-hPa Wind Total
Valid: 20250312 - 20250318



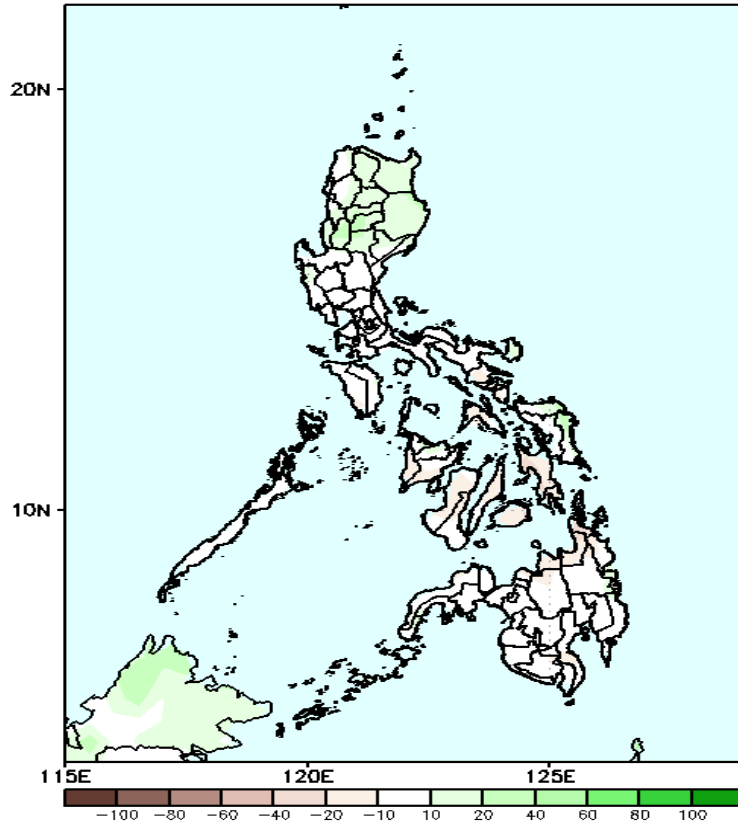
Northeast Monsoon affecting Extreme Northern Luzon while Easterlies affecting the rest of the country during the forecast period

Precipitation Anomaly and Exceedance Probability > 25/50 mm



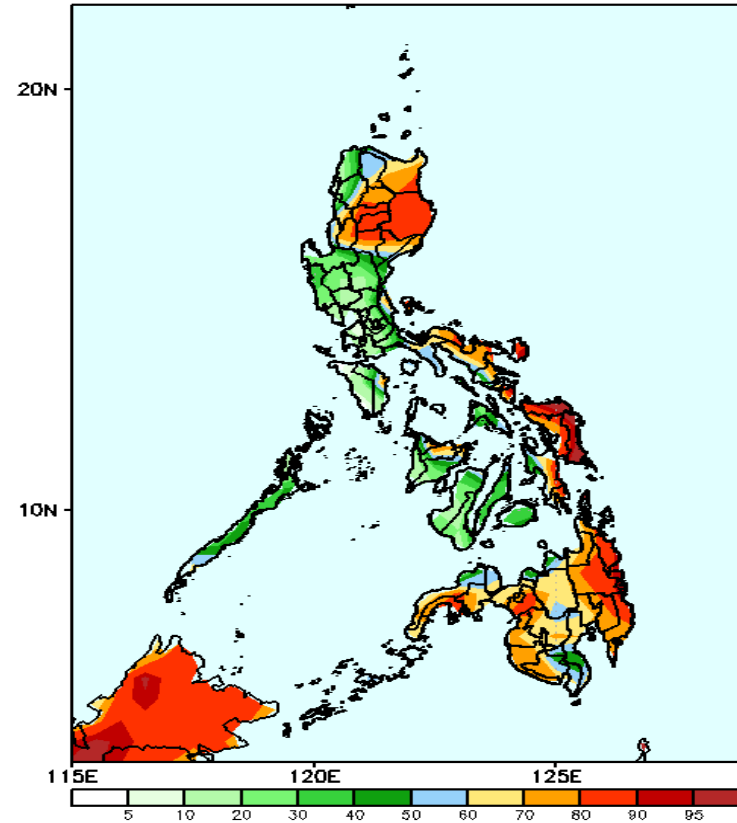
Week 2: Mar 12-18, 2025

GEFS Week-2 Precip Anomaly
Valid: 20250312 - 20250318



Increase of rainfall of 20-40mm is expected over most part of CAR, Cagayan and Isabela.

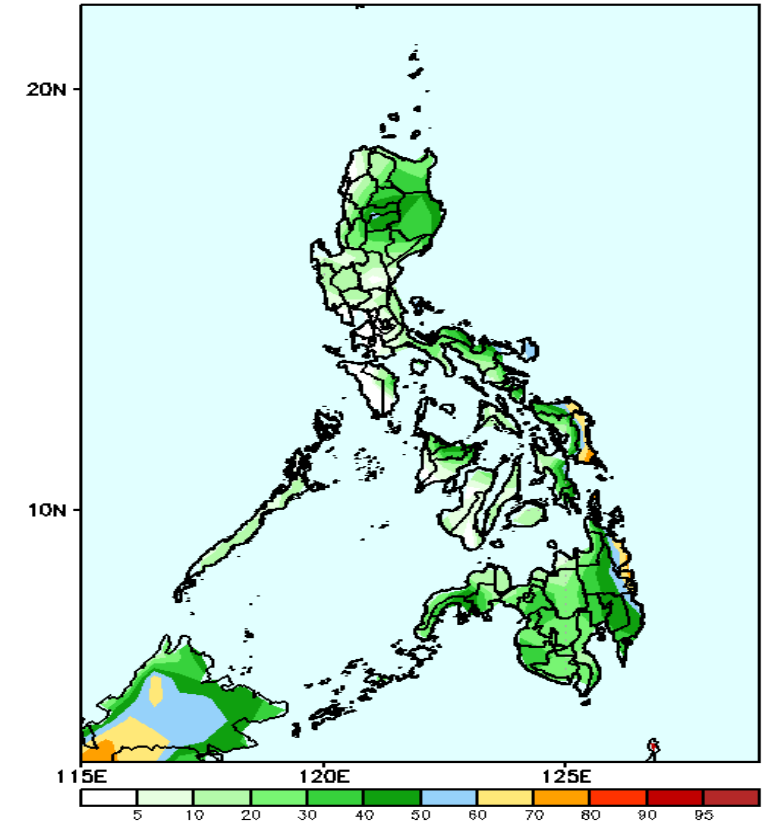
GEFS Week-2 Exceedance Prob. > 25mm
Valid: 20250312 - 20250318



Probability to Exceed 25mm

- High to very high over most parts of Isabela, Mt. Province, Ifugao, Catanduanes, Sorsogon, Eastern Visayas, and eastern Mindanao;
- Moderate to high over the rest of Northern Luzon, Quezon, Bicol Region, and the rest of Mindanao;
- Low to moderate over the rest of the country.

GEFS Week-2 Exceedance Prob. > 50mm
Valid: 20250312 - 20250318



Probability to Exceed 50mm

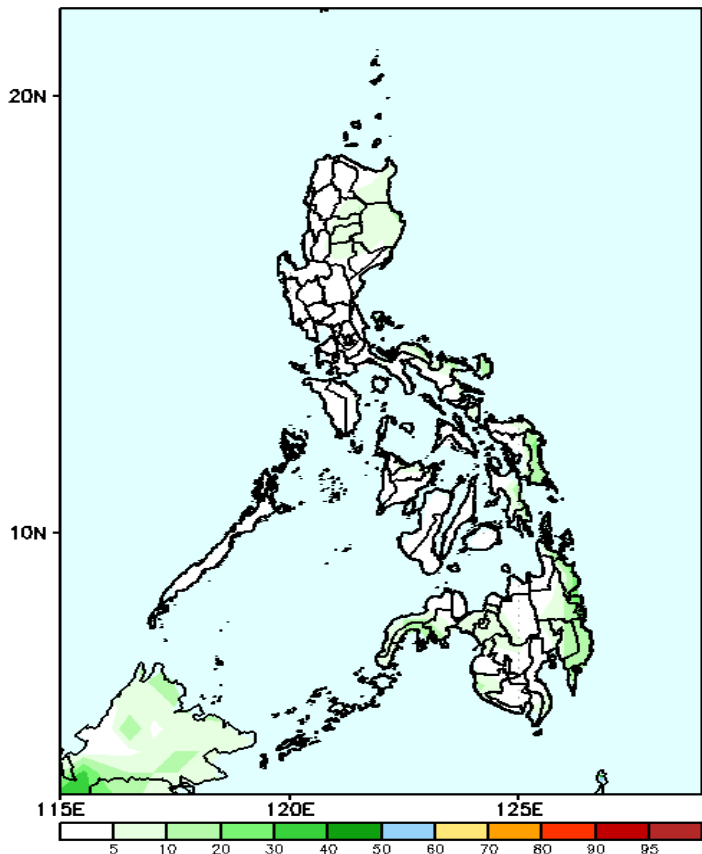
- Moderate to high over Samar Provinces and Eastern Mindanao;
- Low to moderate over the rest of the country.

Exceedance Probability > 100/150/200 mm

- Very high probability
- High Probability
- Moderate Probability
- Low Probability

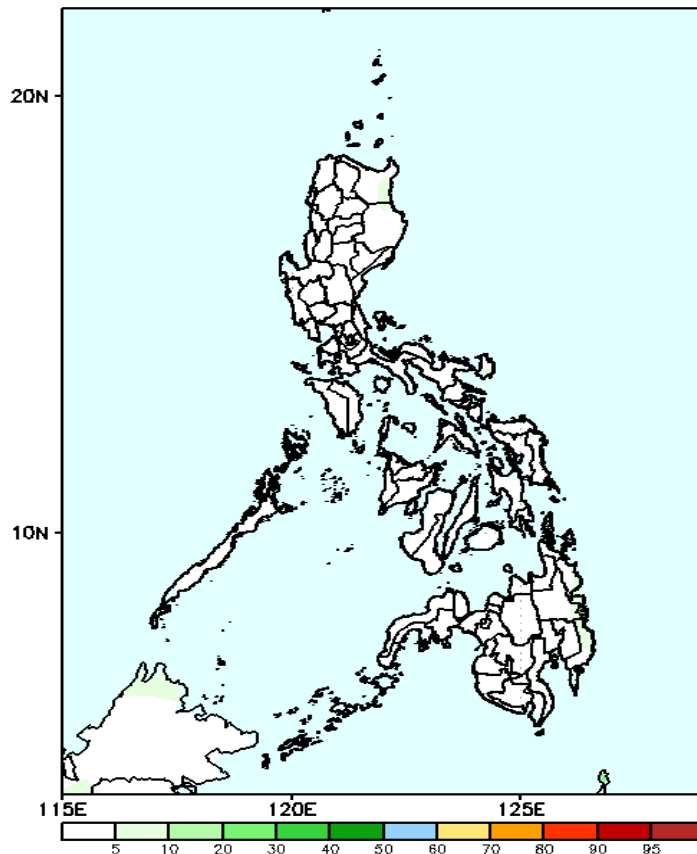
Week 2: Mar 12-18, 2025

GEFS Week-2 Exceedance Prob. > 100mm
Valid: 20250312 - 20250318



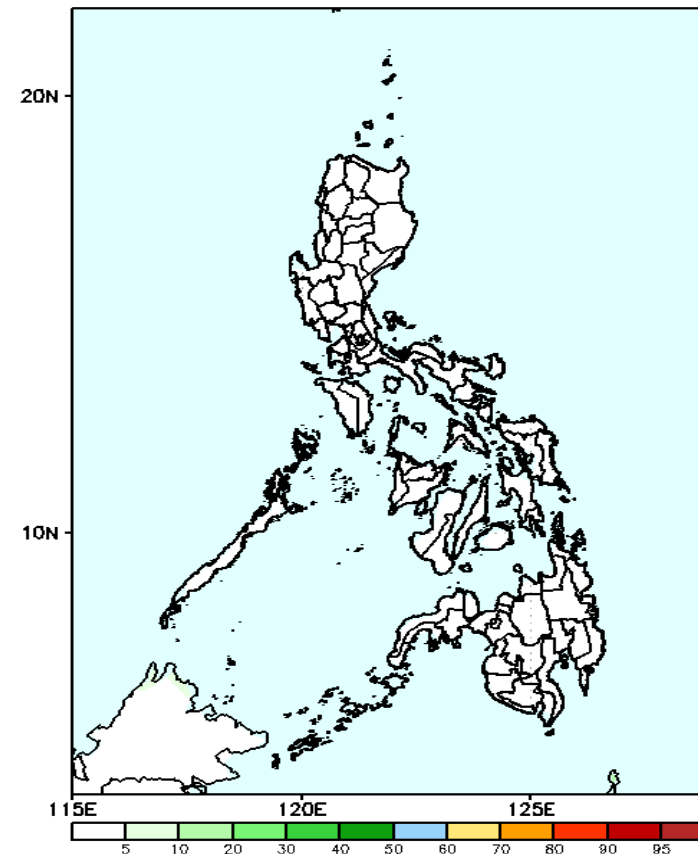
Probability to Exceed 100mm
•Low to moderate across the country.

GEFS Week-2 Exceedance Prob. > 150mm
Valid: 20250312 - 20250318



Probability to Exceed 150mm
•Low across the country.

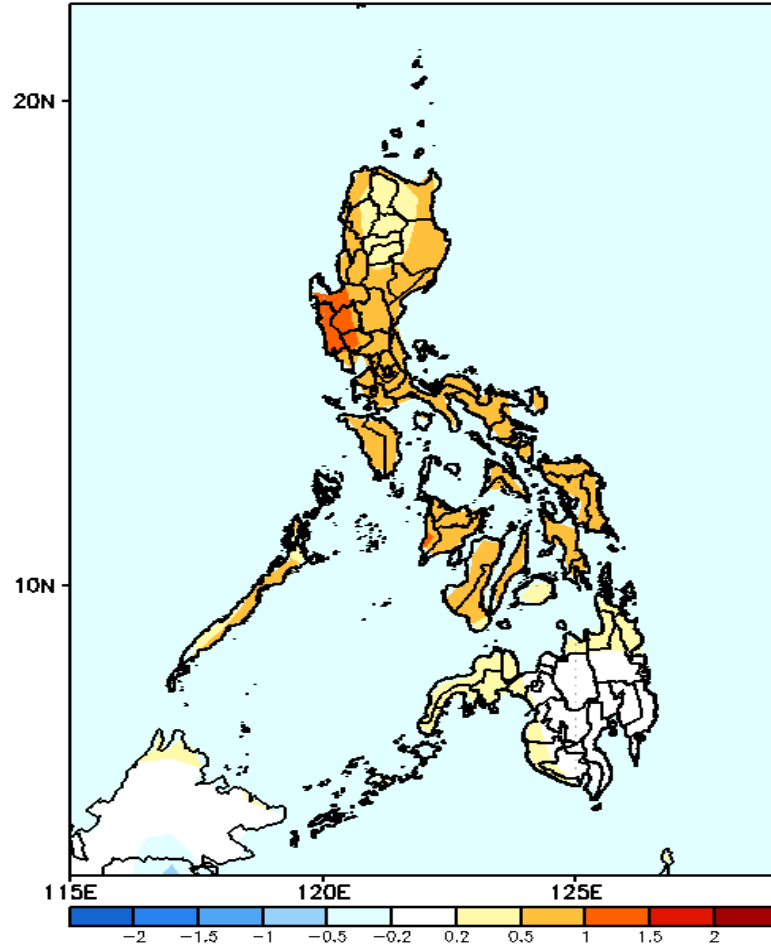
GEFS Week-2 Exceedance Prob. > 200mm
Valid: 20250312 - 20250318



Probability to Exceed 200mm
•Low across the country.

GEFS Week-1 & 2 Forecasts: T2m Anomaly

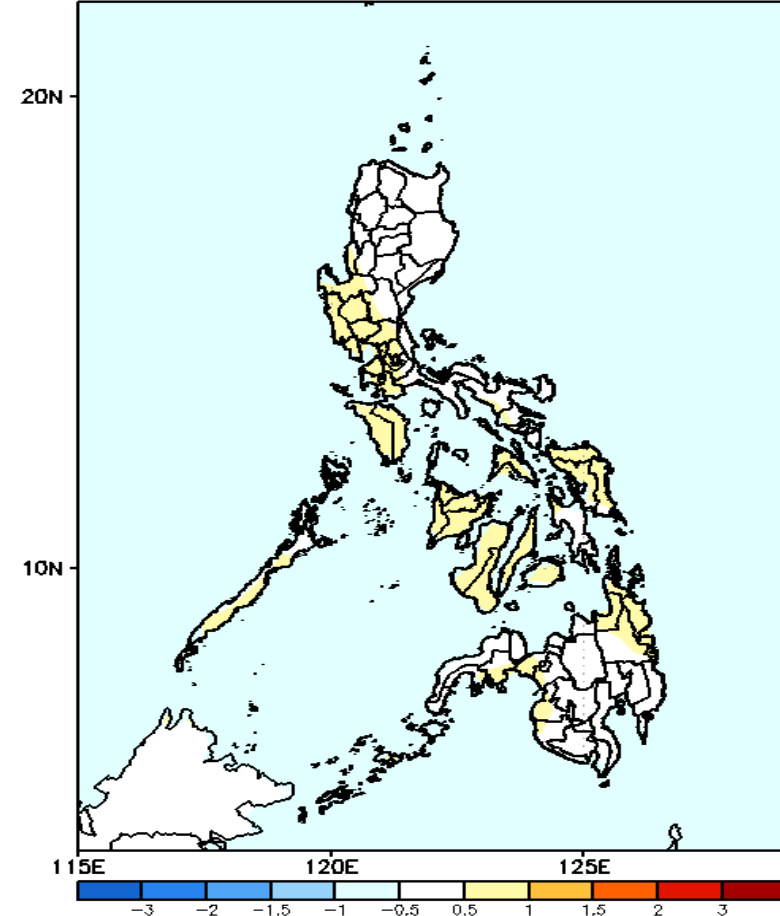
GEFS Week-1 T2m Anomaly
Valid: 20250305 - 20250311



2m Temperature Week 1: Mar 05-11, 2025

Slightly warmer to warmer than average air temperature will likely be experienced in Luzon and Visayas while near average surface air temperatures is expected in Mindanao.

GEFS Week-2 T2m Anomaly
Valid: 20250312 - 20250318



2m Temperature Week 2: Mar 12-18, 2025

Near to slightly warmer than average air temperature will likely be experienced in most parts of the country.